

SIMULATED T.V.



- A programmed microprocessor controls the LED illumination
- The unit is featured with 3 blue and 2 white super bright LED to imitate the illumination from TV
- Dual power sources – 3 AA batteries (Alkaline are recommended not included) or 4.5V DC adapter (not included)
- Equipped with high sensitive CDS sensor to automatically activate the unit at night

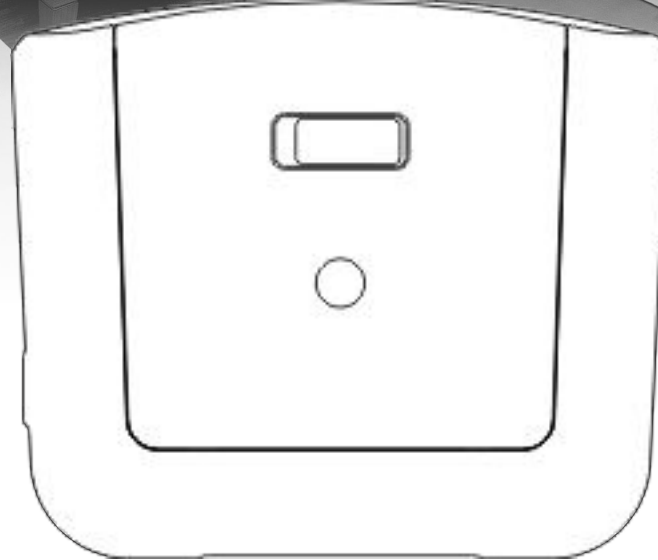


DX-H112

Pat. Pending Made in China



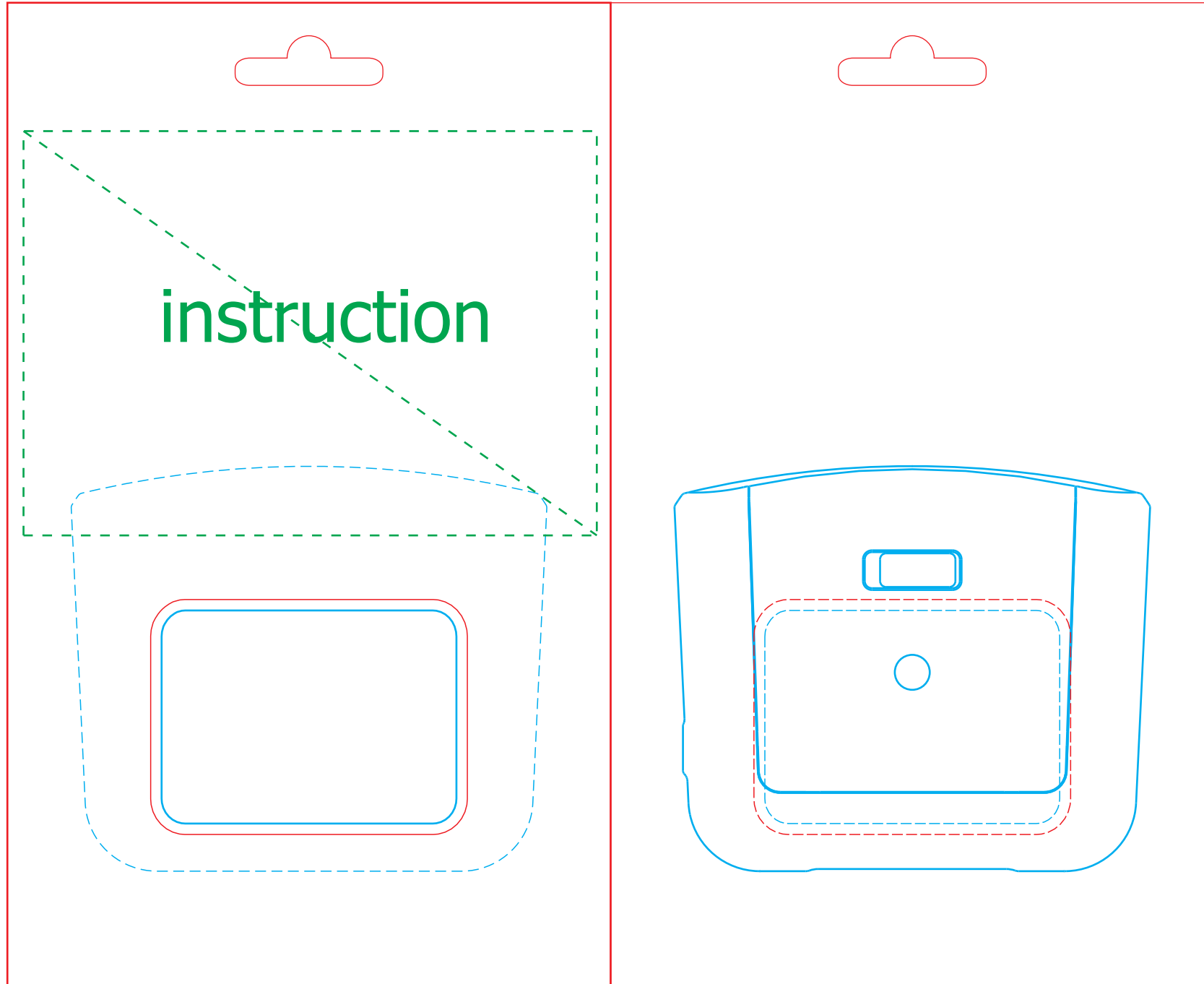
SIMULATED T.V.



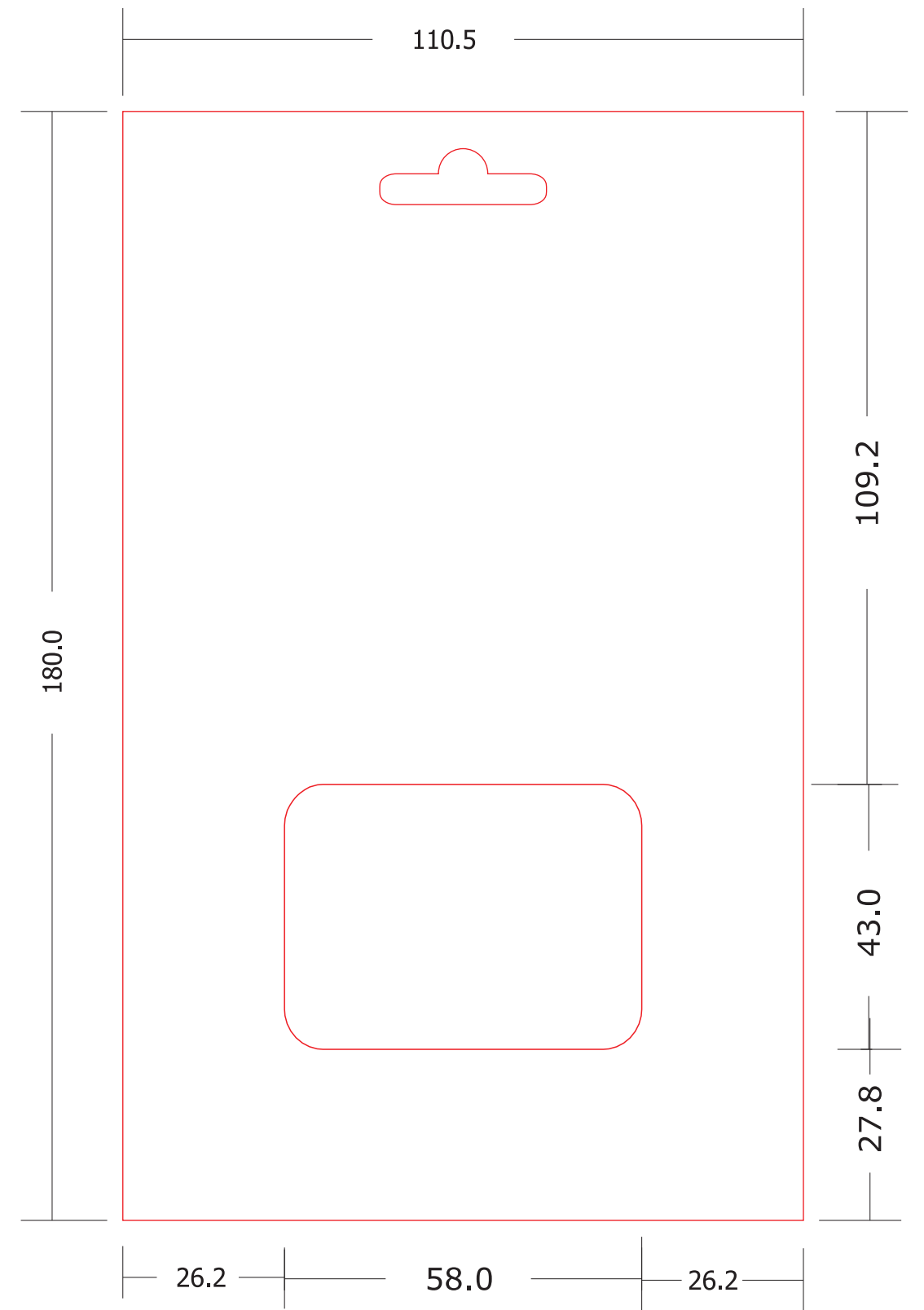
Simulates a TV illumination to deter theft
when you are not at home

BACK

FRONT



刀模



FRONT

BACK

